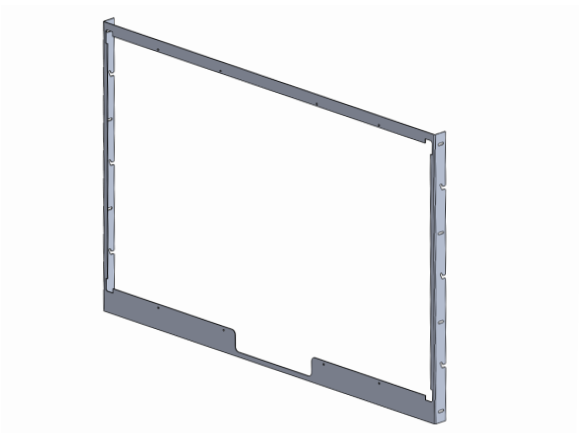


Aquavision uses a variety of fixing methods when designing Bespoke televisions. Each Bespoke piece will often use a combination of the following components. This is generally decided by the Drawing Technician however should you have a specific mounting requirement please contact technical@aquavision.tv.

Chassis Mount Kit

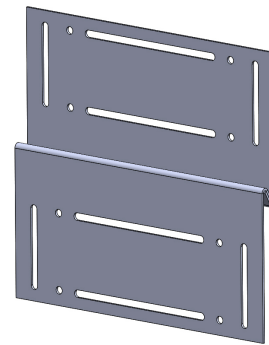
When a television is included in any piece, a Chassis Mount Kit will almost always be included too. This is the metalwork that will hold your television in place. On all smaller sizes this is generally supplied already glued to the glass however on larger screens it is recommended to supply and install this separately to reduce the load on the glass from the weight of the screen.



Hook Brackets (Small or Large)

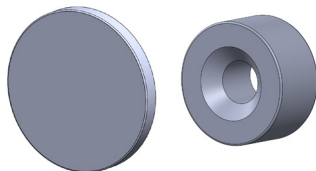
Hook Brackets are our standard mounting option. These are the most substantial and weightbearing brackets we offer. They are available in either Small or Large and each set is supplied as an identical pair, one is fixed to the glass while the other is mounted to an appropriate structure such as a beam or frame. The image below shows a mating pair.

NOTE - Installations with Small Hook Brackets need atleast 15 mm clearance above the glass. Installations with Large Hook Brackets need atleast 25mm.



Magnets and Attractors

In addition to Hook Brackets, Magnets and attractors are often used in areas to 'pull' the glass in and for extra support. Each magnet has a pull force of 10kg. If specified in the drawing, 30mm metal attractors will be glued to the glass and a corresponding fixing magnet [provided] will need to be screwed into a support frame, aligning with the centre of the attractor.



L-Brackets (Small or Large)

L-Brackets are our specialist mounting option and used in cases where less space is available above the glass. These are available in either Small or Large and each set is supplied in two parts. The 'L' shape is fixed to the glass while the flat part with location pins is mounted to an appropriate structure such as a beam or frame. The image below shows both parts of a large L-Bracket.

NOTE - Installations with L-Brackets need atleast 12 mm clearance above the glass.

