



IP/RS232 COMMUNICATION SETUP INSTRUCTIONS

Instructions on how to set up your IP Address

Your Aquavision is shipped with a static IP address; this can be changed to DHCP from the internal webpage.

Factory Settings are	IP Address	192.168.1.11
	Subnet Mask	255.255.255.0
	Default Gateway & DNS	192.168.1.254
	IP Command Port is	3300
	Baud Rate	115200
	webpage	192.168.1.11/setup

To reset back to factory settings as above press and hold the reset switch located between the RS232 and the Ethernet socket on the Aquavision for 10 seconds.

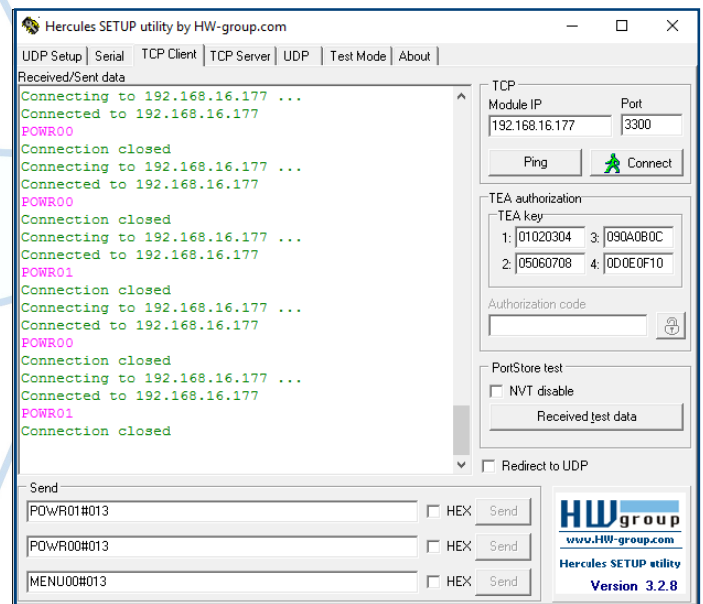
Please note:-

There has to be a 10 second gap between loading or refreshing the internal setup webpage and sending an IP command and vice versa



Instructions on how to set up Hercules for IP Control

- Select the TCP Client tab
- Type the IP address of the unit you wish to control
- Type the Port, factory default is 3300
- To turn TV on click type POWR01#013 and then click connect, Click send
- To turn TV on click type POWR00#013 and then click connect, Click send
- To turn the TV menu on/off click type MENU00#013 and click connect click send



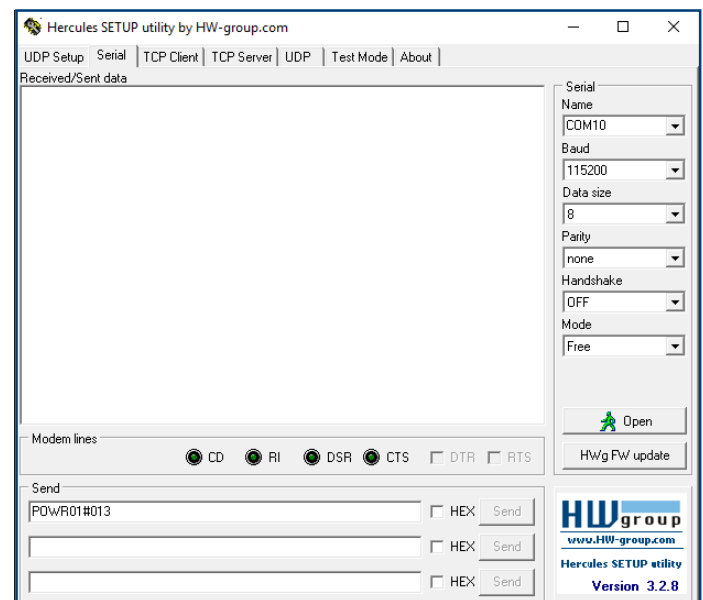
Instructions on how to set up Hercules for RS232 Control

Hercules can be used as a standard RS232 client as well as a TCP client as featured above

Select the Serial Tab

Settings down the right hand side need to be

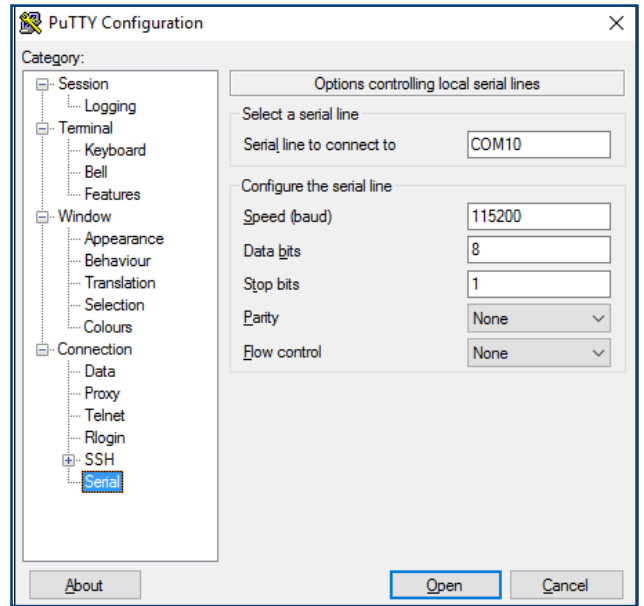
- Your COM port
- Baud, 115200
- Data Size, 8
- Parity, none
- Handshake, Off
- Mode, Free



Instructions on how to set up Putty for RS232 Control

- Load Putty from the main screen
- Serial setup for European TV
- Serial line, Your COM Port
- Speed, 115200
- Select, Serial radio button

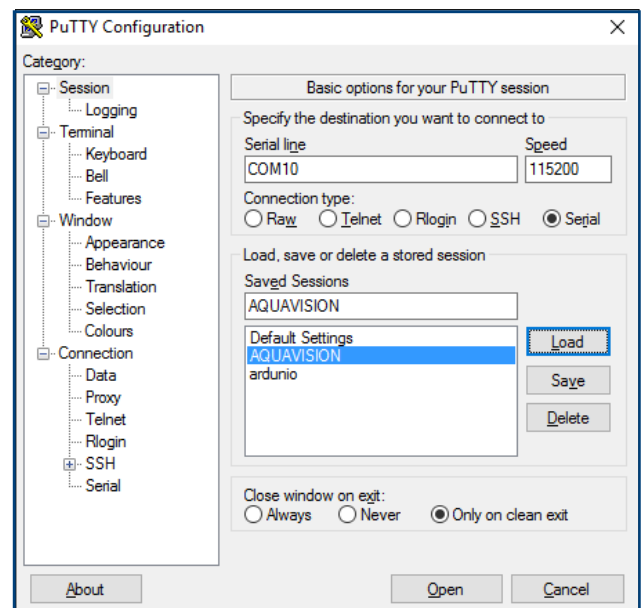
(see attached pictures)



- Under Category left hand side select Serial.
- Again check your
- Serial line to connect to, Your COM Port
- Serial line to connect to, Your COM Port
- Speed (baud), 115200

- Data bits, 8
- Stop bits, 1
- Parity, None
- Flow Control, None

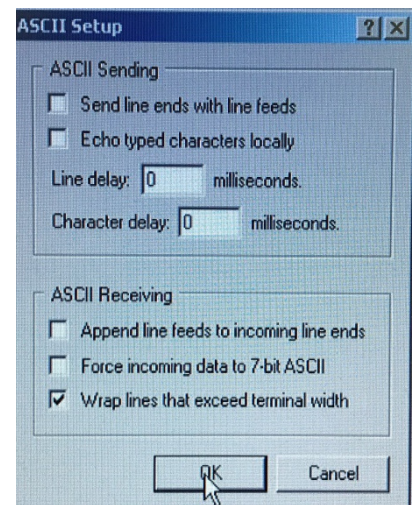
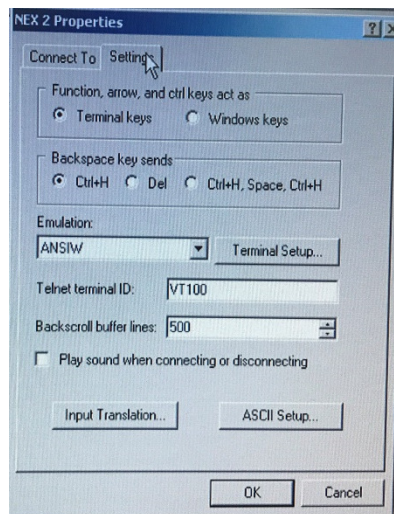
When you load the terminal after entering the details above in Putty you may have to hit enter to show something on the screen.



Instructions on how to set up Hyperterminal for RS232 Control

- Set up the connection as follows
- Serial line to connect to, Your COM Port
- Speed (baud), 115200

- Data bits, 8
- Stop bits, 1
- Parity, None
- Flow Control, None



HEAD OFFICE AND FACTORY
 Aquavision
 Unit 2 Grosvenor Business Park
 Horsfield Way, Stockport
 Cheshire, SK6 2SU
 United Kingdom
 +44 [0]161 711 900

AMERICAN OFFICE
 Aquavision, Inc.
 #197
 5 Southside Drive, Suite 11
 Clifton Park, NY 12065
 America
 +1 800 524 1804



sales@aquavision.tv
 sales@aquavision.us

www.aquavision.tv
 www.aquavision.us