

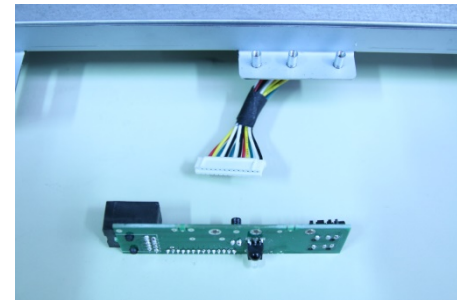
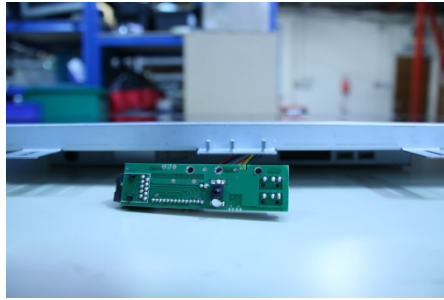
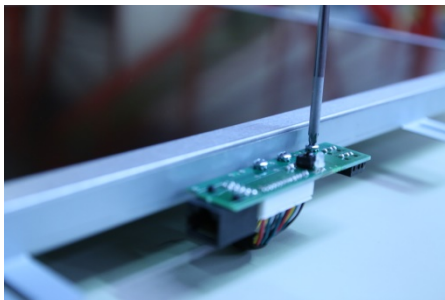


Controlling Your **BANG & OLUFSEN** via Your Aquavision

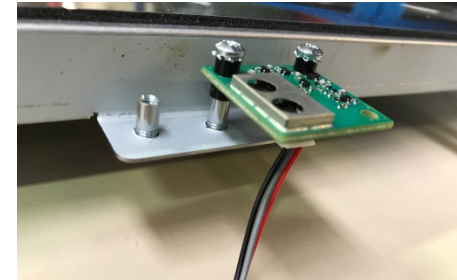
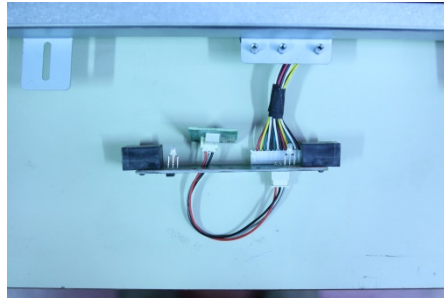
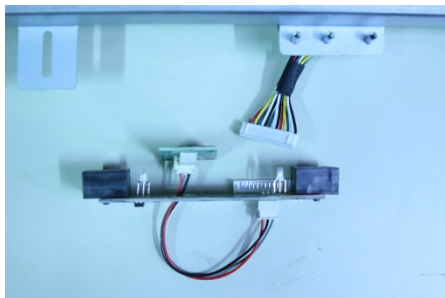
Offering you seamless integration with your BEOSystem4 and your Aquavision without the need for separate IR transmitters and receivers.

First, you will need to install a replacement IR control board with our BANG AND OLUFSEN board (part number AVF-B&OBRD). To do this, follow the instructions as shown below

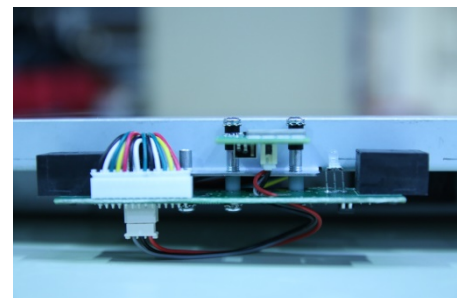
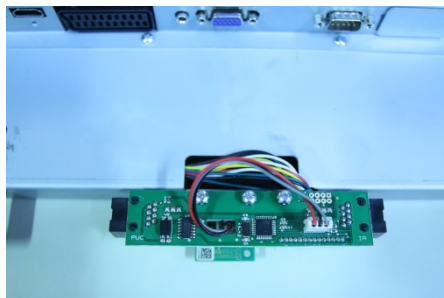
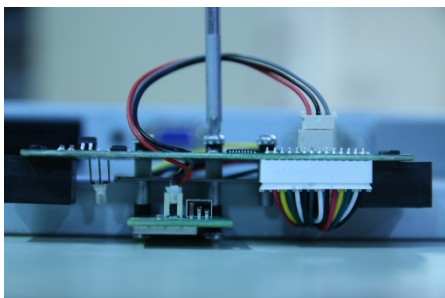
1. Remove the IR board from the bottom of the TV by unscrewing either 2 screws (old style) or 3 screws (new style) and carefully unplug the 14 way header cable from this board.
2. Install the new B&O board as shown below



Unscrew, disconnect and discard IR board supplied with your Aquavision



Connect the B&O board to the Aquavision and install the small daughter board as shown. When installing this board, dependent on the model and age of the television, you may need to use the spacers and longer screws (supplied). This board should be installed on the front of the fixings as shown. Spacers could be used to lift the small board as high up as possible without it being above the front of the screen.



Next install the larger board on the rear. Spacers /insulating washers (supplied) should be used where necessary as shown above

3. Once installed, this board will allow you to control your Aquavision directly via your BeoSystem 4, or directly from your B&O remote control

- a. **Aquavision controlled by BeoSystem 4.** By using the AVF-B&OBRD replacement IR PCB, two Cat 5 cables are now connected in the sides of the PCB, one for IR out and the other IR in, going straight to the BS4. The BS 4 needs to be set up in a specific way to work:

- i. Enter the Setup menu on the BS4
- ii. Display setup
- iii. Download Aquavision WRC-5B PUC
- iv. Select → choose PUC number and use “B”
- v. Press “Red” (Manual setup)
- vi. Press “Select”
- vii. Choose “Plug”
- viii. Choose “Modulation Off”



BeoSystem 4

- b. **Aquavision controlled by your B&O remote control**

- i. For this feature, simply install the board as detailed above and don't connect anything into either of the RJ45 connectors. The B&O remote works as detailed below



BeoRemote One	Aquavision Remote	BeoRemote One	Aquavision Remote	BeoRemote One	Aquavision Remote
Play	Play	Long Green	Green	TTX	TTX
P+	P+	Long Yellow	Yellow	Vol+	Vol+
P-	P-	Long Blue	Blue	Vol-	Vol-
Skip Right	Right	Power Off	Power Off	0	0
Skip Left	Left	Power On	Power On	1	1
Pause	Pause	Menu Long	Menu	2	2
Back	Exit	Menu	Source	3	3
Guide	EPG Guide	OK Long	EPG Guide	4	4
Red	Red	OK	OK	5	5
Green	Green	Up	Up	6	6
Yellow	Yellow	Down	Down	7	7
Blue	Blue	DTV	DTV	8	8
Long Red	Red	Mute	Mute	9	9



HEAD OFFICE AND FACTORY
 Aquavision Distribution Limited
 Unit 2, Grosvenor Business Park
 Horsfield Way
 Stockport, Cheshire. SK6 2SU
 England
 Tel +44 (0)161 711 1900

AMERICAN OFFICE
 Aquavision, Inc.
 #197
 5 Southside Drive, Suite 11
 Clifton Park, NY 12065
 America
 +1 800 524 1804



sales@aquavision.tv
 sales@aquavision.us

www.aquavision.tv
 www.aquavision.us