



Aquavision TV Driver

For use with:

Aquavision Televisions



Driver software written and provided by:



Contents:

- Page 3 - Introduction
- Page 3 - Control4 Configuration
 - Add the driver to your project
 - Make connections
- Page 5 - Troubleshooting
 - Notes

Introduction

This is a reference manual to describe the interface provided between a Control4 system and a Aquavision Television via the serial port (**RS232**). The driver support the Aquavision S4 Operation codes for RS232.

This module was written and tested using Composer version **2.4** running on an HC-800 controller and an Aquavision Television 22" model running Si2158_FW_1_1b1.
The driver version is currently **v201**.

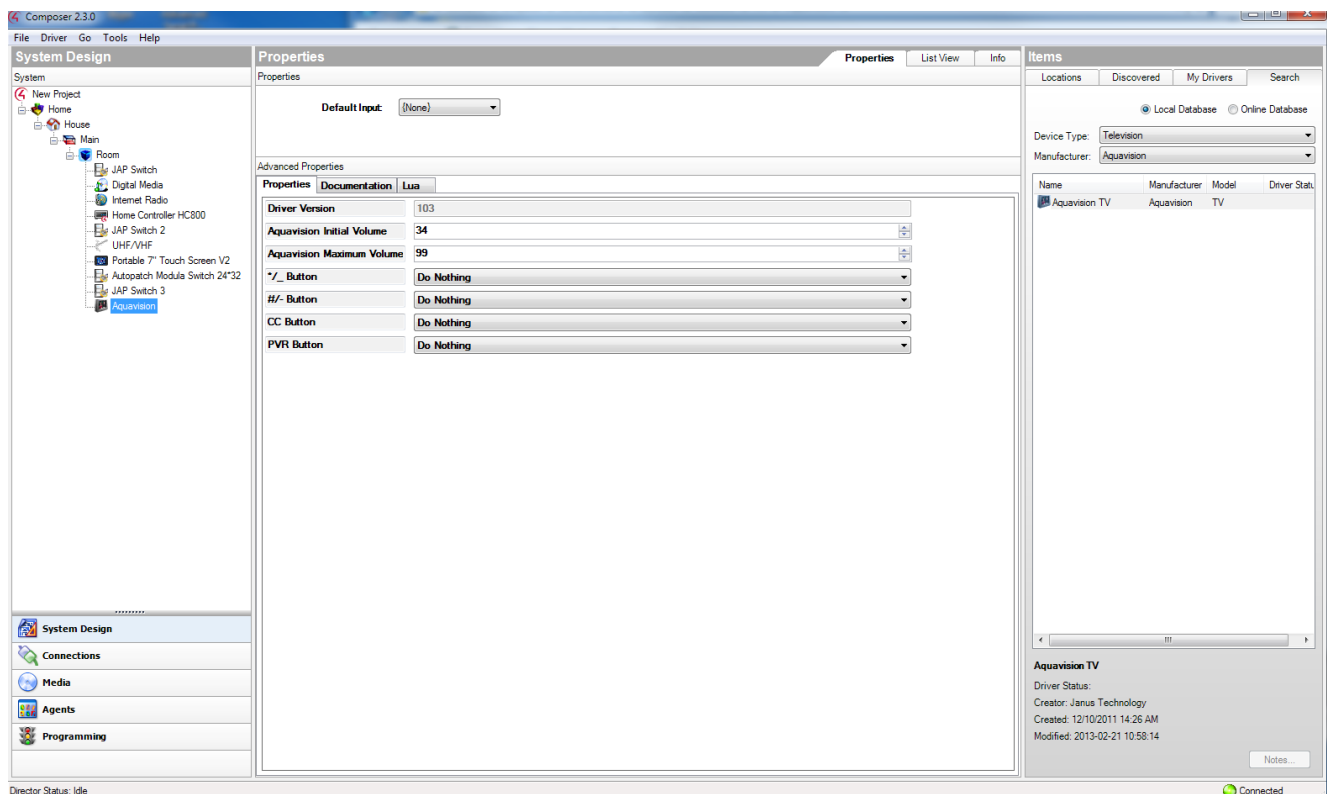
Control4 Configuration

Add the driver to your project

Copy the .c4i files from the zip package to
My Documents\Control4\Drivers

Open Composer

The driver can be found under Device Type : Television – Manufacturer : Aquavision
It will appear as an Aquavision Television as shown below.



In the Properties tab, configure the initial volume and the maximum volume for the television. There are several functions which are available on the Aquavision Television that do not correspond to the Control 4 interface. There are 4 spare buttons which can be mapped to 4 extra functions, if desired.

Make connections

Configure the control and audio/video connections as per standard Control4 practice. It is necessary to make an RS232 connection from the Control 4 control input to the appropriate RS232 output devices serial port . A female to female null modem cable is required to physically connect the Control4 serial port to the television port.

Configure as many video and audio input/output ports as the project requires.

The screenshot shows the Composer 2.3.0 software interface. The left sidebar contains a tree view of the project structure, including 'New Project', 'Home', 'Main', 'Room', 'JAP Switch', 'Digital Media', 'Internet Radio', 'Home Controller HC800', 'JAP Switch 2', 'UHF/VHF', 'Portable 7" Touch Screen V2', 'Autopatch Modula Switch 24"32', 'JAP Switch 3', and 'Aquavision'. The main window is divided into two panels: 'Connections' and 'Control & Audio Video Connections'.

The 'Control & Audio Video Connections' panel is further divided into several sections:

- Audio/Video Inputs:** A table listing various input devices and their connections.

Name	Type	Connection	Input/Output	Connected To
DTV_AERIAL	Video	RF_UHF_VHF	Input	UHF/VHF->UHF/VHF Video Output
HDMI_1	Video	HDMI	Input	
HDMI_2	Video	HDMI	Input	
PC_IN	Video	VGA	Input	
AV	Video	COMPOSITE	Input	
S_VIDEO	Video	S_VIDEO	Input	
SCART_1	Video	COMPOSITE	Input	
SCART_2	Video	COMPOSITE	Input	
COMPONENT	Video	COMPONENT	Input	
PC_IN	Audio	STEREO	Input	
AV	Audio	STEREO	Input	
S_VIDEO	Audio	STEREO	Input	
SCART_1	Audio	STEREO	Input	
SCART_2	Audio	STEREO	Input	
COMPONENT	Audio	STEREO	Input	
- Audio/Video Outputs:** A table listing various output devices and their connections.

Name	Type	Connection	Input/Output	Connected To
FIXED_AUDIO_OUT	Audio	STEREO	Output	
VARIABLE_AUDIO_OUT	Audio	STEREO	Output	
DIGITAL_AUDIO_OUT	Audio	DIGITAL_OPTICAL	Output	
- Control Inputs:** A table listing control input devices and their connections.

Name	Type	Connection	Input/Output	Connected To
Serial RS232	Control	RS_232	Input	Home Controller HC800->SERIAL 1
- Room Control:** A table listing room control devices and their connections.

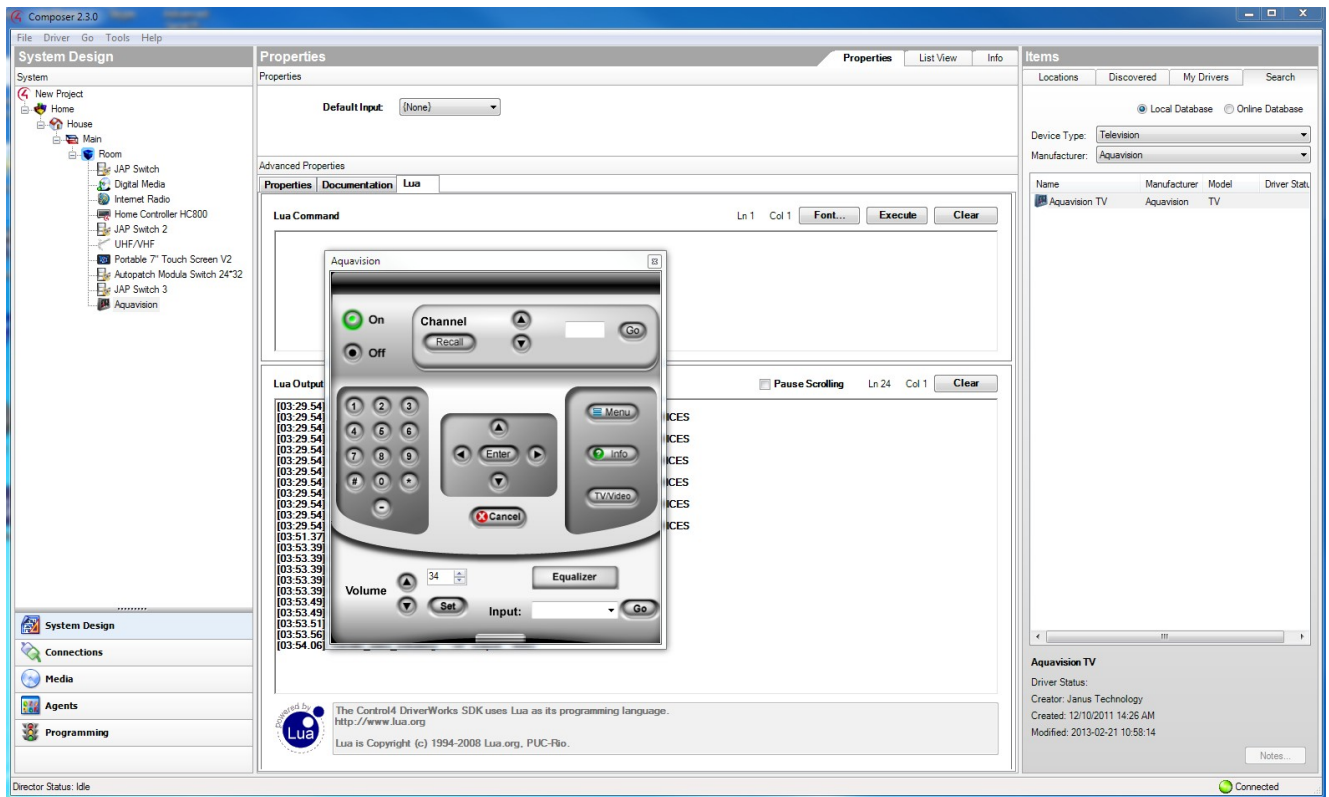
Name	Type	Connection	Input/Output	Connected To
Room Selection - Output	RoomControl	AUDIO_SELECTION	Output	Room->Audio End-Point 1, Room->Video's Audio End...
Room Selection - Output	RoomControl	AUDIO_VOLUME	Output	Room->Video Volume 1, Room->Audio Volume 1
Room Selection - Output	RoomControl	VIDEO_SELECTION	Output	Room->Video End-Point
- RS_232 Output Devices:** A table listing RS_232 output devices and their connections.

Device	Name	Location	Connections
Home Controller HC800	SERIAL 1	Room	Aquavision->Serial RS232
Home Controller HC800	SERIAL 2	Room	

The bottom status bar shows 'Director Status: Idle' and a 'Connected' indicator.

Aquavision Television Driver

Double-click the switch icon in System Design and a control window will appear.



Troubleshooting

The user cannot select a digital channel using the digits on the control window, but the channel may be adjusted via up and down buttons. The mute functions are accessed via the Equaliser button.

Notes

The initial mute status defaults to mute off as no mute feedback is received at start up. Mute status is not updated if the Aquavision remote is used.

Only volume feedback is received when the Aquavision remote is used.

Check the serial cable is correctly fitted to the television serial port and the appropriate port of the control 4 processor unit.